



# Flight Plan & Site Survey

Created using **RPAS Wilco®**

Reference No:	AD49D3
Title:	KMAS Tolko higher 05-16-2025
Pilot Name:	Randall Hepner
Pilot Certificate:	[REDACTED]
Flight Start:	May 16, 2025 8:03 PM
Flight End:	May 16, 2025 10:03 PM
Flight Area (Latitude):	50° 50' 26.40" N ( 50.841 )
Flight Area (Longitude):	120° 16' 5.70" W ( -120.268 )
Altitude - Radius:	<b>Alt:</b> 1700 ft - <b>Rad:</b> 926.0 m ( 0.5 nm)
Classification:	CONTROLLED
FIR - Contact:	CZVR - 604-586-4500

## Notes:

Your flight is in controlled airspace.

If your RPAS is > 250g, please obtain RPAS Flight Authorization using the NavDrone app or by contacting NavCanada. (CARs 901.71)

Please ensure you received all required authorizations prior to flight.

## Disclaimer

This Site Survey was created using RPAS Wilco by AIM Robotics. The flight plan contained is intended only for RPAS flights on the date/time and location specified. The user accepts all responsibility for the accuracy and completeness of the information contained.

For the complete Terms & Conditions, see

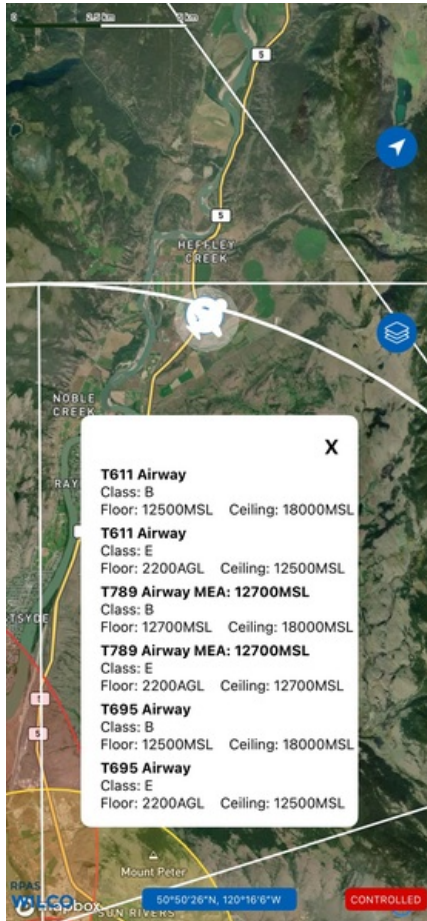
<https://rpaswilco.com/#/tnc>

## Included

- Site Survey
- Obstacles (if available)
- Nearby Aerodromes
- Canadian Aviation Regulations
- GFA
- Aerodrome Supplements
  - METAR & TAF (if available)
  - NOTAMs
  - CFS





## Flight Map



## RPAS Specification

- **Manufacturer:**  
MAAC
- **Model:**  
MODEL AIRPLANE
- **Registration Number:**  
[REDACTED]
- **Eligible for advanced operations:**  
Yes
- **Manufacturer RPAS safety assurance:**
  - Controlled Airspace: Yes
  - Near People: N/A
  - Over People: N/A

## MAP Details

	Latitude	Longitude
 <b>MODEL</b>	50° 50' 26.40" N ( 50.841 )	120° 16' 5.70" W ( -120.268 )
 <b>Pilot</b>	50° 50' 30.00" N ( 50.8417 )	120° 16' 9.30" W ( -120.2692 )



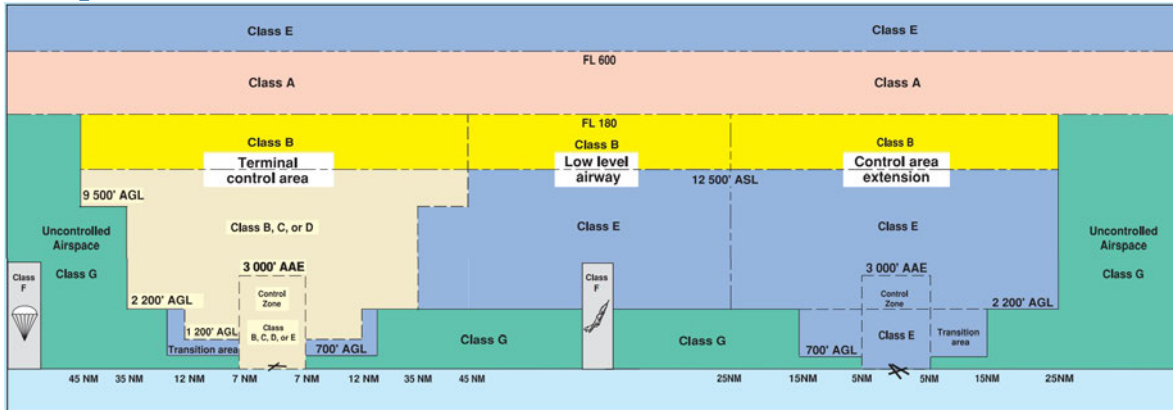
Sign Up Today!

**RPAS**  
CENTRE | CANADA

Canada's **#1** FREE Drone Training Hub



## Airspace Classification



## Overlying Airspaces

Class	Name	Floor	Ceiling
E	Williams Lake, BC CAE	8000MSL	12500MSL
B	Williams Lake, BC CAE	12500MSL	18000MSL
B	T650 Airway	12500MSL	18000MSL
E	T650 Airway	2200AGL	12500MSL
E	T611 Airway	2200AGL	12500MSL
B	T611 Airway	12500MSL	18000MSL
E	T687 Airway	2200AGL	12500MSL
B	T687 Airway	12500MSL	18000MSL
E	Kamloops, BC TA	1600AGL	12500MSL
B	Kamloops, BC TA	12500MSL	18000MSL
B	Kamloops, BC TA	12500MSL	18000MSL
E	Kamloops, BC TA	700AGL	12500MSL
E	T695 Airway	2200AGL	12500MSL
B	T695 Airway	12500MSL	18000MSL
E	T789 Airway MEA: 12700MSL	2200AGL	12700MSL
B	T789 Airway MEA: 12700MSL	12700MSL	18000MSL

## Nearest Aerodromes & Distance from Operation

KAMLOOPS (CAH7 - WATERDROME - Reg)	Lat: 50.7	Long: -120.433	19.465KM 10.51NM SW
KAMLOOPS (CYKA - AERODROME - Cert)	Lat: 50.703	Long: -120.448	19.852KM 10.72NM SW
KAMLOOPS (ROYAL INLAND HOSPITAL) (CBC4 - HELIPORT - Cert)	Lat: 50.669	Long: -120.333	19.624KM 10.6NM S

# CANADA WATER AERODROME SUPPLEMENT

Effective 0901Z 17 April 2025 to 0901Z 19 March 2026

B90 AERODROME/FACILITY DIRECTORY

**JENKINS COVE NB** — See KARS / JENKINS COVE

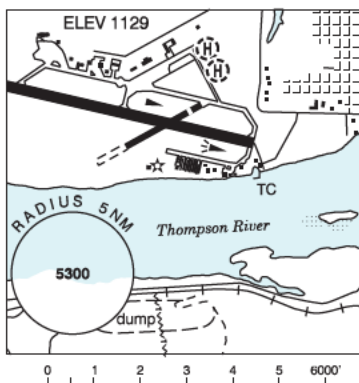
**JENNY'S LANDING ON** — See KENNISIS LAKE / JENNNY'S LANDING

**JOHN'S BAY ON** — See LAKE ROSSEAU / JOHN'S BAY

**KAMANISKEG LAKE ON** — See COMBERMERE / KAMANISKEG LAKE

## KAMLOOPS BC

<b>REF</b>	N50 42 W120 26 3WNW 17°E (2013) UTC-8(7) Elev 1129' A5004
<b>OPR</b>	Kamloops Aprt Ltd 250-376-3613 Reg
<b>PF</b>	A-1,2,3,6 C-4,5 at adj land A/D
<b>CUST</b>	AOE/15 16-08Z† 888-226-7277
<b>FLT PLN</b>	
<b>FIC</b>	Kamloops 866-WXBRIEF (Toll free within Canada) or 866-541-4101 (Toll free within Canada & USA)
<b>SERVICES</b>	Float cart chg. Call out chg may be levied for one or more svcs. Mountaineer Svc 250-376-3800, Spring Avn 250-554-2616.
<b>FUEL</b>	100LL, JA-1 avbl at adj A/D, acft removal fr water rqrd, refuelling at dock proh.
<b>OIL</b>	Shell 250-376-7633 or 250-819-9345 PN. Executive Flight Centre 250-376-9069.
<b>S</b>	80, 100, 120 1 (ltd), 2,3 (at adj land A/D), 5



<b>A/D DATA</b>	Open water Apr-mid Nov. Depth 12', sand bottom, current 5 kt. Spring freshets raise water level by 12'. Buoys, ramp & beach.
<b>COMM</b>	
<b>RADIO</b>	125.7 297.0 (V) (emerg only 250-376-7941)
<b>RCO</b>	Pacific rdo 123.375 (FISE) 126.7 (bcst)
<b>MF</b>	rdo 125.7 5NM 4100 ASL centred on land A/D (CAR 602.98)
<b>PRO</b>	Seaplane conform to land A/D t/c pattern: Rgt hand circuits Rwy 04, 22 & 27 (CAR 602.96). E departures climb to 2200 ASL or river junction before turning N.
<b>CAUTION</b>	Migratory bird activity in vic of A/D. Seasonal boat t/c. Dur low water sand bars hazardous; oprg channel swings from N side of river E of dock, to S side W of dock. Adj land A/D. Class "E" CZ to 5NM radius, 4100 ASL (2900 AGL).

## KAMLOOPS FIC - RCO

Cross reference to PACIFIC RADIO - RCO (New)

## KAMLOOPS FSS - RCO

Victoria 119.7 (RAAS) 08-14Z† (N48 38 W123 25)

# CANADA WATER AERODROME SUPPLEMENT

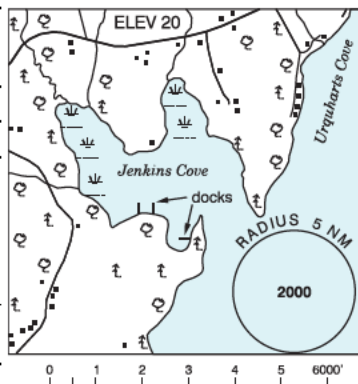
Effective 0901Z 17 April 2025 to 0901Z 19 March 2026

AERODROME/FACILITY DIRECTORY B91

## KARS / JENKINS COVE NB

CJO3

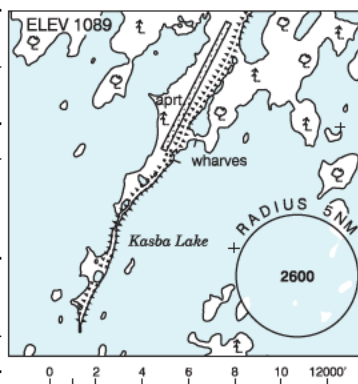
<b>REF</b>	N45 35 38 W65 57 25 1.3ESE 17°W (2017) UTC-4(3) Elev 20' A5003
<b>OPR</b>	Richard Pattie 506-485-1122 Reg
<b>PF</b>	B-1 C-2,5
<b>FLT PLN</b>	
<b>FIC</b>	London 866-WXBRIEF (Toll free within Canada) or 866-541-4104 (Toll free within Canada & USA)
<b>ACC</b>	(IFR only) Moncton 506-867-7177 or 866-480-8200.
<b>SERVICES</b>	
<b>S</b>	5
<b>A/D DATA</b>	Open water May-Dec
<b>COMM</b>	
<b>ATF</b>	ttc 123.05 5NM 3000 ASL



## KASBA LAKE NT

CJP5

<b>REF</b>	N60 17 W102 31 7°E (2013) UTC-6(5) Elev 1089' A5024 A5031
<b>OPR</b>	Kasba Lake Lodge 250-248-3572 Reg PPR
<b>PF</b>	B-1,2,5 PN Oprg Jun15-Sep 1
<b>FLT PLN</b>	
<b>FIC</b>	Edmonton 866-WXBRIEF (Toll free within Canada) or 866-541-4102 (Toll free within Canada & USA)
<b>SERVICES</b>	
<b>FUEL</b>	100LL, JA Prior arng thru Opr Jun 15 - Aug 15
<b>A/D DATA</b>	Open water Jun-Oct. Sand beach.
<b>COMM</b>	
<b>ATF</b>	UNICOM ltd hrs O/T ttc 122.8 5NM 4200 ASL



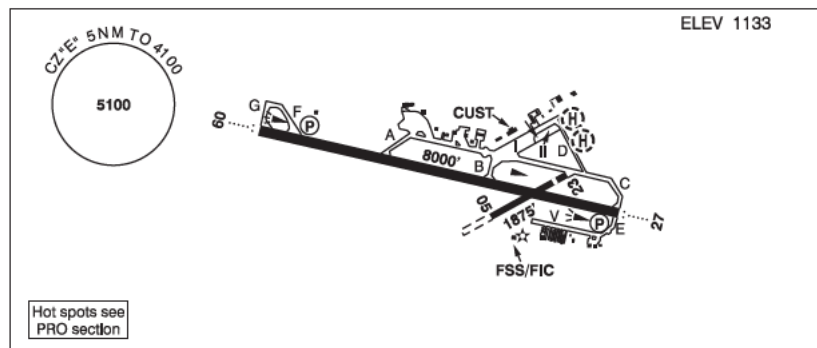


## BRITISH COLUMBIA

## AERODROME/FACILITY DIRECTORY

## KAMLOOPS BC

CYKA



<b>REF</b>	N50 42 09 W120 26 55 5WNW 16°E (2016) UTC-8(7) Elev 1133' A5004 LO2 HI3 CAP RCAP
<b>OPR</b>	Kamloops Aprt Ltd 250-376-3613 Cert
<b>PF</b>	A-1,2,3,6 C-4,5
<b>CUST</b>	AOE/30 1630-0030Z± Mon-Fri exc hols 888-226-7277
<b>FLT PLN</b>	
<b>FIC</b>	Kamloops 866-WXBRIEF (Toll free within Canada) or 866-541-4101 (Toll free within Canada & USA) or 250-376-8392
<b>WX</b>	METAR H24. TAF H24, issue times: 01, 07, 13, 19Z.
<b>SERVICES</b>	Call out chg may be levied for one or more svcs
<b>FUEL</b>	100LL, JA-1 (FSII avbl)
<b>OIL</b>	80, 100, 120
<b>S</b>	1 (ltd), 2,3,4,5,6 (ltd)
<b>ARFF</b>	DESIGNATED CAT 6 14-08Z±, O/T 2 hr PN 250-376-3233 call out chg
<b>PVT ADV</b>	Shell 123.0 250-376-7633; Executive Flight Centre 122.85 250-376-9069
<b>MIL CON</b>	Executive Flight Centre Fuel 250-376-9069
<b>RWY DATA</b>	Rwy 09(087°)/27(267°) 8000x148 ASPH Rwy 05(045°)/23(225°) 1875x49 ASPH Thld 23 displ 249'.
<b>RWY CERT</b>	Rwy 05/23 AGN I Rwy 09/27 AGN IIIB
<b>TWY CERT</b>	Twy: D, E AGN II
<b>TWY</b>	Twy A, no vehicle ctl first 600' W of Apron I. Twy E: Unlgt
<b>APRON</b>	Apron 1: Uncontrolled, avbl to sked pax flt only. All acft must yield to acft in pushback from ATB. Prkg fees. Apron II: Uncontrolled, avbl for transient and itinerant prkg. All acft must yield to acft in pushback from ATB. Pilot/pax access via groundside Gate 10 only; no access/egress permitted via ATB. Prkg fees. Apron V: Uncontrolled, PPR for prkg on or within 25' of aprn.
<b>RCR</b>	FSS Win maint 13-08Z± O/T 2 hrs PN cost recovery. CRFI, PCN.
<b>LIGHTING</b>	09-AO(TE ME) P2, 27-AO(TE ME) P2 ARCAL-125.7 type K avbl when FSS clsd PAPI limitation/restriction. PAPI Rwy 09 to be used only within 4NM of thld; PAPI Rwy 27 to be used only within 4NM of thld. Twy D RR.

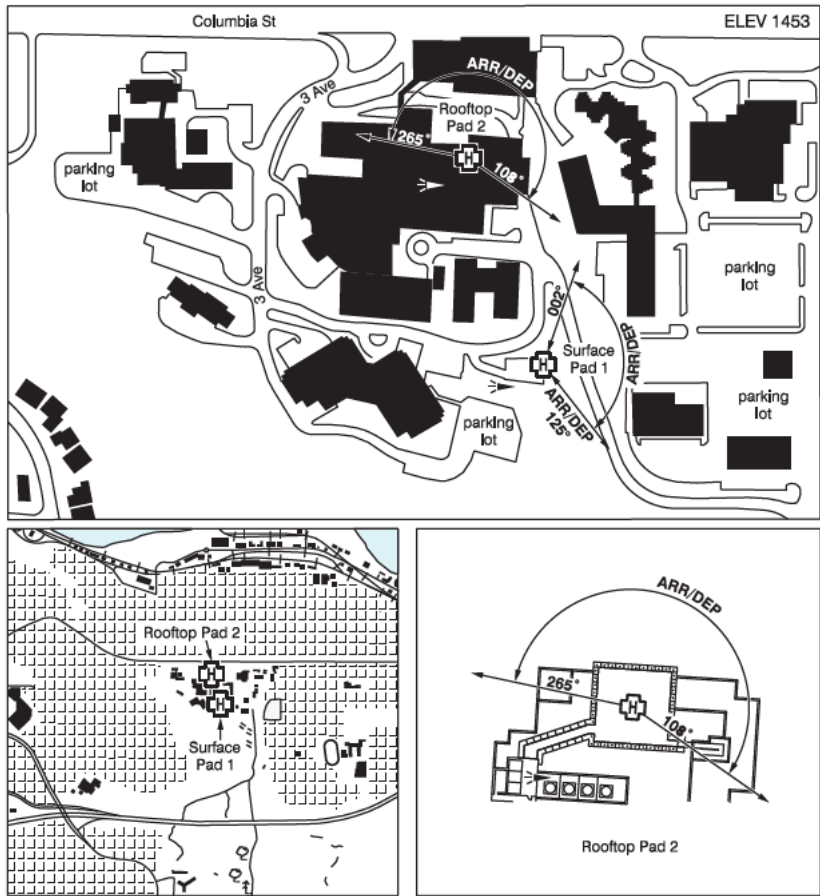
KAMLOOPS BC (Cont'd)

CYKA

COMM	
RADIO	125.7 PTC avbl (V) (emerg only 250-376-7941)
RCO	Pacific rdo 123.375 (FISE) 126.7 (bcst)
CLNC DEL	121.9 PTC avbl ltd hrs
MF	rdo 125.7 5NM 4100 ASL (CAR 602.98)
PAL	Vancouver Ctr 132.35 133.5 134.4 236.0
NAV	
DME	IKA 109.3 Ch 30 N50 42 14 W120 27 41 (1136')
ILS	IKA 109.3 (Rwy 09)
LOC	IPP 109.9 (Rwy 27)
PRO	<p>Pilots should refer to Canadian Airport Charts (CAC) to obtain details on established hot spots, prior to operating on maneuvering areas. CAC are available for free on the NAV CANADA website.</p> <p>Day: rgt hand circuits Rwys 05, 23 &amp; 27 (CAR 602.96). Night: follow VTTC night circuit pro. Tkof and ldg in grass adj rwys by fixed-wing acft not auth.</p>
CAUTION	<p>Migratory bird activity in vic of A/D. Only pilots familiar with lcl terrain should use this aprt dur hrs of darkness. Ngt ops not recommended unless all 6 hazard beacons are oprg. Hi terrain reduces operational length of Rwys 09 and 27 PAPI.</p> <p>Painted &amp; lgtd twr 1253 ASL (128 AGL) aprx 250' beyond Thld 05 and aprox 2710' NW rwy centreline. Fuel facility (tanks 80 AGL) aprx 0.5NM NE A/D; no low alt heli ops.</p>

KAMLOOPS (ROYAL INLAND HOSP) BC (Heli)

CBC4



REF	N50 40 09 W120 19 59 Adj 17°E (2012) UTC-8(7) Elev 1453' A5004
OPR	Interior Health Authority 250-374-5111 Cert PPR
PF	B-1,2,4 C-3,5,6
FLT PLN	
FIC	Kamloops 866-WXBRIEF (Toll free within Canada) or 866-541-4101 (Toll free within Canada & USA) or 250-376-8392
HELI DATA	Surface Pad 1: FATO 86' dia elevated TLOF 57' dia CONC Safety Area 115' dia elevated 17,000 lbs Max heli overall length 57.4' (CAR 602.96) Rooftop Pad 2: FATO 86' x 86' non-supporting TLOF 71' x 71' CONC Safety Area 115' x 115' 18,000 lbs Max heli overall length 57.4' (CAR 602.96)
RCR	Opr
LIGHTING	Surface Pad 1: RY(LO) green ARCAL-125.7 type J Rooftop Pad 2: RW(ME) green LED ARCAL-122.9 type K



KAMLOOPS (ROYAL INLAND HOSP) BC (Heli) (Cont'd)

CBC4

COMM	<div>MF</div> <div>A/G</div> <div>Kamloops rdo 125.7 5NM 4100 ASL centered on Kamloops aprt (CAR 602.98). Hosp Security PEPCORD1 148.655 FM 3 min PN</div>
PRO	<div>Surface Pad 1 Arr/dep 125° fr heli, (H3) (CAR 602.96). Arr/dep 002° to 125° fr heli, (H1) (CAR 602.96). Rooftop Pad 2 Arr/dep 265° to 108° fr heli (H1) (CAR 602.96).</div>
CAUTION	<div>Unlgtd embankment to 40', adj SE. Marked &amp; lgtd hosp penthouse elevator aprx 30' W of rooftop pad safety area.</div>

# Canadian Aviation Regulations

## Division III — General Operating and Flight Rules

For full listing please visit : <https://laws-lois.justice.gc.ca/eng/regulations/SOR-96-433/FullText.html#s-901.27>

### Visual Line-of-sight

- **901.11 (1)** Subject to subsection (2), no pilot shall operate a remotely piloted aircraft system unless the pilot or a visual observer has the aircraft in visual line-of-sight at all times during flight.
- **(2)** A pilot may operate a remotely piloted aircraft system without the pilot or a visual observer having the aircraft in visual line-of-sight if the operation is conducted in accordance with a special flight operations certificate — RPAS issued under section 903.03.

### Procedures

- **901.23 (1)** No pilot shall operate a remotely piloted aircraft system unless the following procedures are established:
  - **(a)** normal operating procedures, including pre-flight, take-off, launch, approach, landing and recovery procedures; and
  - **(b)** emergency procedures, including with respect to
    - **(i)** a control station failure,
    - **(ii)** an equipment failure,
    - **(iii)** a failure of the remotely piloted aircraft,
    - **(iv)** a loss of the command and control link,
    - **(v)** a fly-away, and
    - **(vi)** flight termination.
- **(2)** If the manufacturer of the remotely piloted aircraft system provides instructions with respect to the topics referred to in paragraphs (1)(a) and (b), the procedures established under subsection (1) shall reflect those instructions.
- **(3)** No pilot shall conduct the take-off or launch of a remotely piloted aircraft unless the procedures referred to in subsection (1) are reviewed before the flight by, and are immediately available to, each crew member.
- **(4)** No pilot shall operate a remotely piloted aircraft system unless the operation is conducted in accordance with the procedures referred to in subsection (1).

### Site Survey

**901.27** No pilot shall operate a remotely piloted aircraft system unless, before commencing operations, they determine that the site for take-off, launch, landing or recovery is suitable for the proposed operation by conducting a site survey that takes into account the following factors:

- **(a)** the boundaries of the area of operation;
- **(b)** the type of airspace and the applicable regulatory requirements;
- **(c)** the altitudes and routes to be used on the approach to and departure from the area of operation;
- **(d)** the proximity of manned aircraft operations;
- **(e)** the proximity of aerodromes, airports and heliports;
- **(f)** the location and height of obstacles, including wires, masts, buildings, cell phone towers and wind turbines;
- **(g)** the predominant weather and environmental conditions for the area of operation; and
- **(h)** the horizontal distances from persons not involved in the operation.

### Operations at or in the Vicinity of an Aerodrome, Airport or Heliport

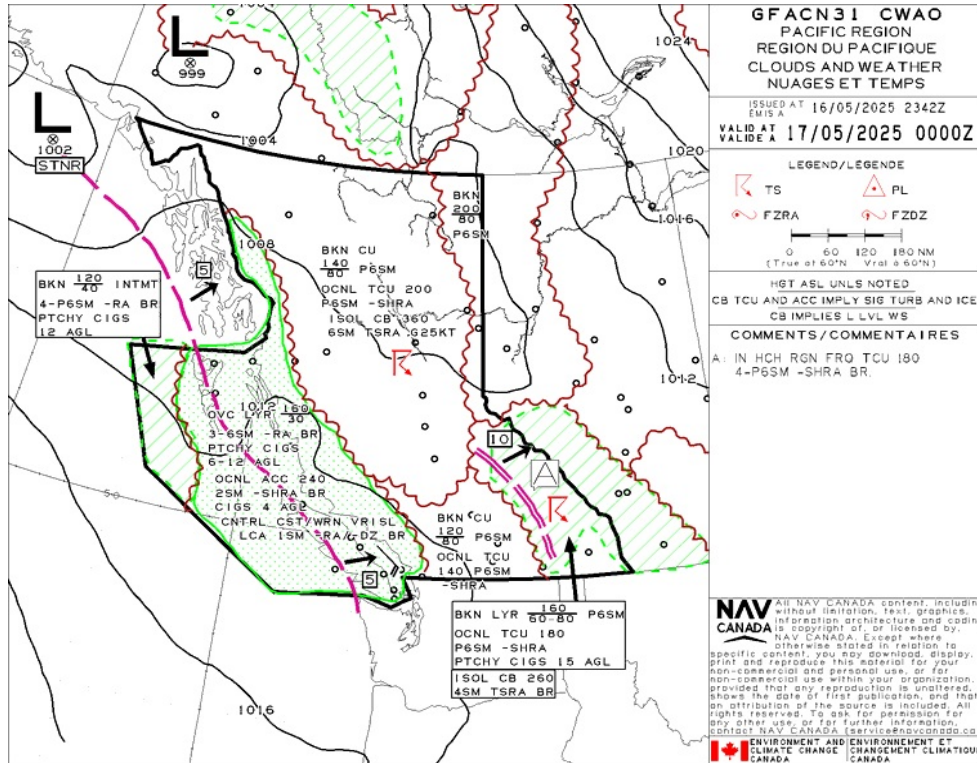
- **901.47 (1)** No pilot shall operate a remotely piloted aircraft at or near an aerodrome that is listed in the *Canada Flight Supplement* or the *Water Aerodrome Supplement* in a manner that could interfere with an aircraft operating in the established traffic pattern.
- **(2)** Subject to section 901.73, no pilot shall operate a remotely piloted aircraft at a distance of less than
  - **(a)** three nautical miles from the centre of an airport; and
  - **(b)** one nautical mile from the centre of a heliport.
- **(3)** No pilot shall operate a remotely piloted aircraft at a distance of less than three nautical miles from the centre of an aerodrome operated under the authority of the Minister of National Defence unless the operation is conducted in accordance with a special flight operations certificate — RPAS issued under section 903.03.

### Records

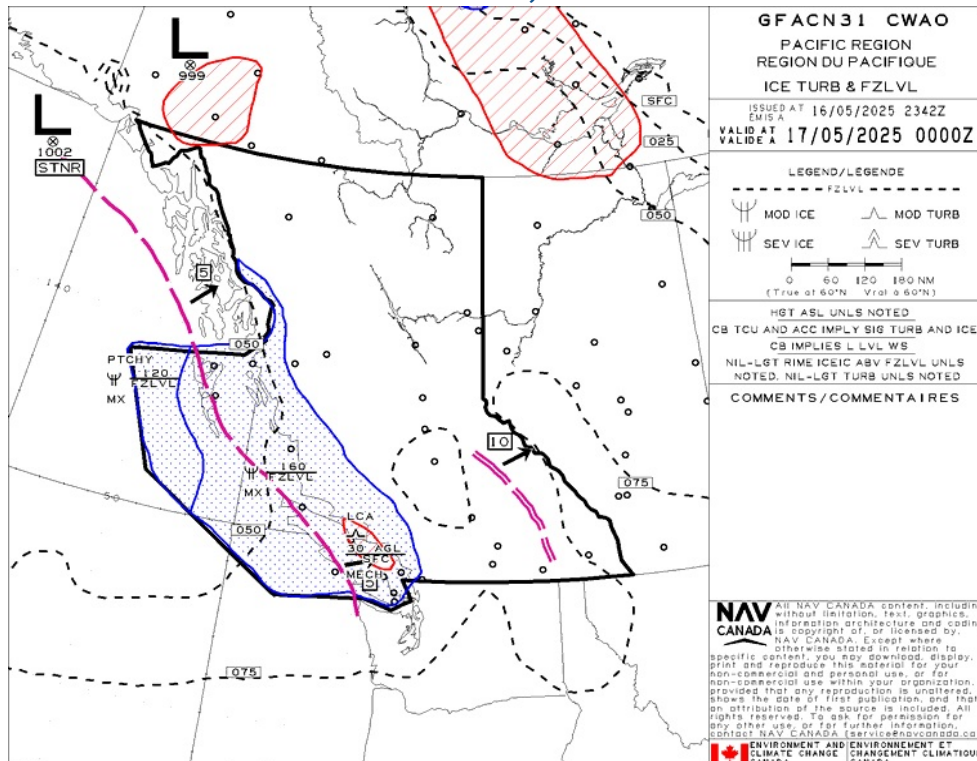
- **901.48 (1)** Every owner of a remotely piloted aircraft system shall keep the following records:
  - **(a)** a record containing the names of the pilots and other crew members who are involved in each flight and, in respect of the system, the time of each flight or series of flights; and
  - **(b)** a record containing the particulars of any mandatory action and any other maintenance action, modification or repair performed on the system, including
    - **(i)** the names of the persons who performed them,
    - **(ii)** the dates they were undertaken,
    - **(iii)** in the case of a modification, the manufacturer, model and a description of the part or equipment installed to modify the system, and
    - **(iv)** if applicable, any instructions provided to complete the work.
- **(2)** Every owner of a remotely piloted aircraft system shall ensure that the records referred to in subsection (1) are made available to the Minister on request and are retained for a period of
  - **(a)** in the case of the records referred to in paragraph (1)(a), 12 months after the day on which they are created; and
  - **(b)** in the case of the records referred to in paragraph (1)(b), 24 months after the day on which they are created.
- **(3)** Every owner of a remotely piloted aircraft system who transfers ownership of the system to another person shall, at the time of transfer, also deliver to that person all of the records referred to in paragraph (1)(b).



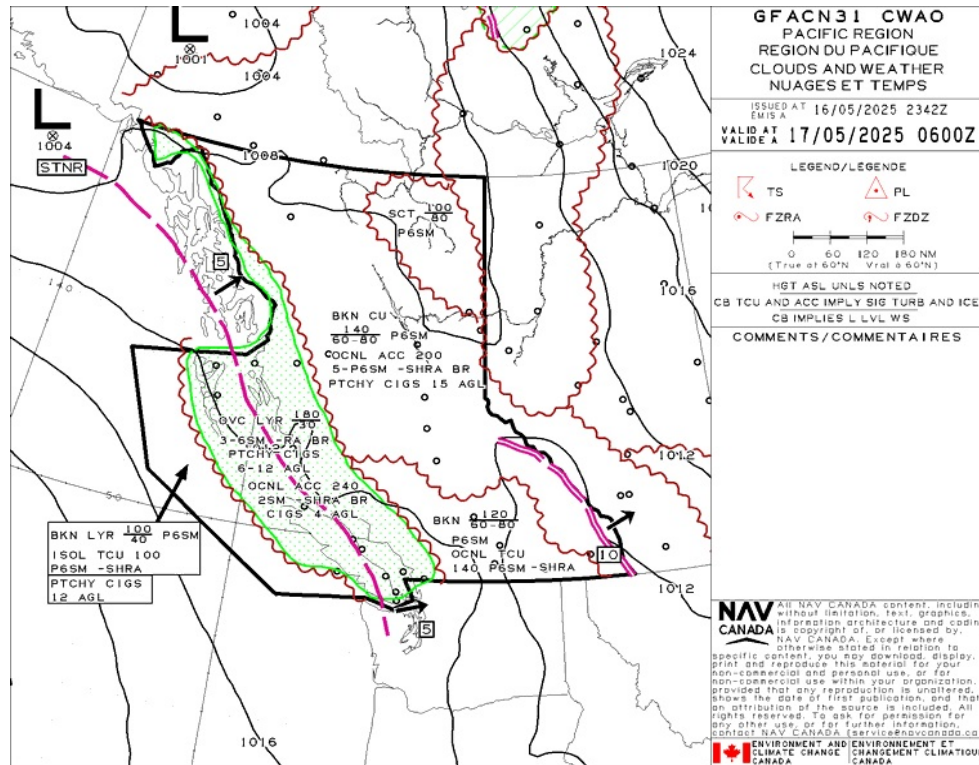
## GFA Issue time + 00 hr - CLOUDS AND WEATHER



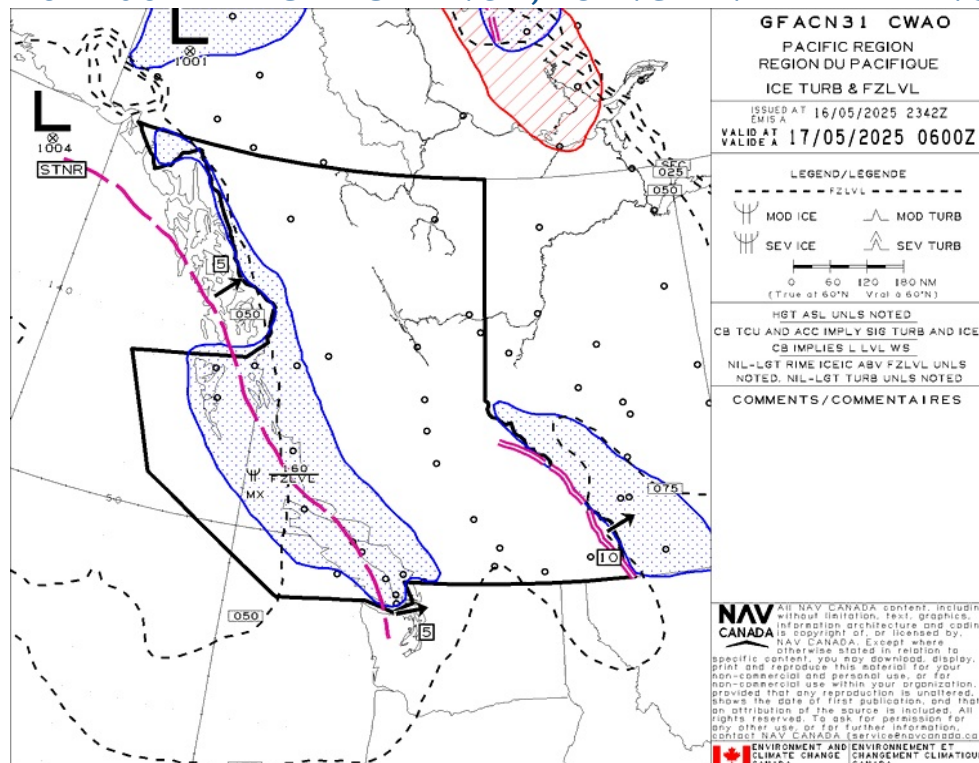
## GFA Issue time + 00 hr - TURBULENCE, ICING AND FREEZING LEVEL



## GFA Issue time + 06 hr - CLOUDS AND WEATHER

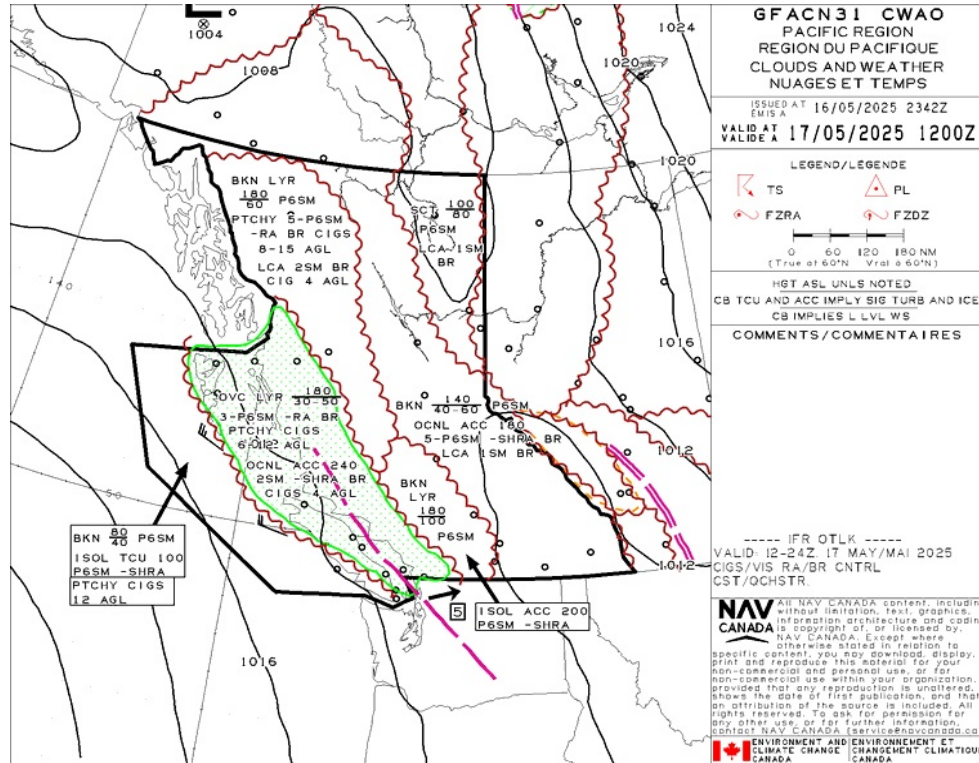


## GFA Issue time + 06 hr - TURBULENCE, ICING AND FREEZING LEVEL

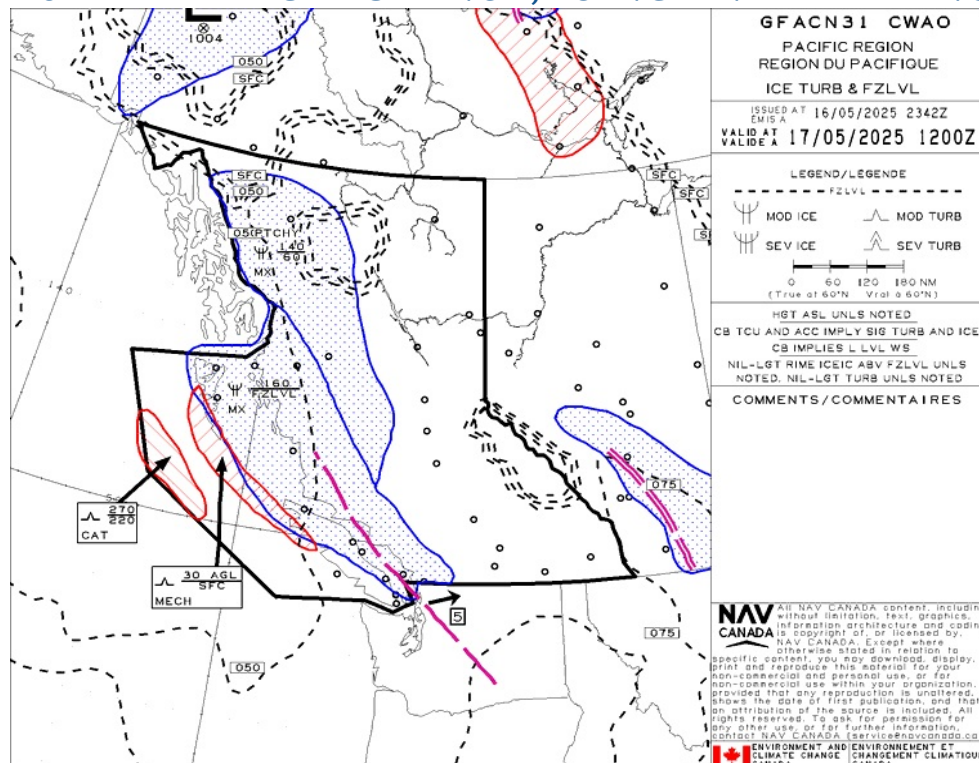




## GFA Issue time + 12 hr - CLOUDS AND WEATHER



## GFA Issue time + 12 hr - TURBULENCE, ICING AND FREEZING LEVEL



## KAMLOOPS - CAH7 - Reg

### NOTAM

(I1921/25 NOTAMN

Q) CZVR/QOBCE/IV/M/AE/000/013/5043N12026W005

A) CYKA B) 2505141400 C) 2505260200

E) MOBILE CRANE WITHIN 100FT RADIUS CENTRED ON 504240N 1202616W APRX 1470FT BFR DTHR 23 AND 2770FT NW EXTENDED RCL. 140FT AGL 1275FT AMSL. NOT LGTD, PAINTED.)

(F1515/25 NOTAMN

Q) CZXX/QGWAU/IV/NBO/E/000/999/4647N12012W260

A) CZVR CZEG B) 2505131200 C) 2505222259

D) DAILY 1200-1559 1900-2259

E) GPS INTERFERENCE EXER

RADIUS 259NM CENTRE 464702N 1201153W FL400-UNL,

246NM RADIUS AT FL250,

174NM RADIUS AT 10000FT AMSL,

164NM RADIUS AT 4000FT AGL,

129NM RADIUS AT 50FT AGL.

GNSS SIGNAL MAY BE PERIODICALLY INTERRUPTED. INFORM ATC OF ANY ADVERSE IMPACT.)

(I1701/25 NOTAMN

Q) CZVR/QFFAH/IV/BO/A/000/999/5042N12027W005

A) CYKA B) 2505011230 C) 2506010730

E) ACFT RESCUE AND FIRE FIGHTING (ARFF) HR OF OPS:

MON-FRI: 0000-0045 0115-0245 0500-0545 0630-0730 1230-1315

1530-1830 2045-2230 2330-2359

SAT: 0000-0045 0115-0245 0500-0545 0630-0730 1230-1315 1530-1830

SUN: 0115-0245 0500-0545 0630-0730 1230-1315 1530-1830 2045-2230 2330-2359

O/T 2HR PN COST RECOVERY)

(F1275/25 NOTAMR F0314/25

Q) CZXX/QOEXX/IV/NBO/E/000/999/6650N11045W999

A) CZEG CZVR B) 2504281317 C) 2507281400EST

E) AIRSPACE SECURITY WARNING ISSUED BY THE DEPARTMENT OF TRANSPORT IN RESPONSE TO THE SECURITY SITUATION IN THE DEMOCRATIC REPUBLIC OF CONGO. CANADIAN AIR OPR AND OWNERS OF ACFT REGISTERED IN CANADA ARE RECOMMENDED NOT TO ENTER FIR KINSHASA (FZZA) BELOW FL260 DUE TO RISK FROM ANTI-ACFT WEAPONRY.)

(I0721/25 NOTAMN

Q) CZVR/QPICH/I/NBO/A/000/999/5042N12027W005

A) CYKA B) 2502200901 C) PERM

E) AMEND PUBLICATIONS: LOC Z RWY 27 APCH: ADD OPS NOTE:

DME RELIABLE ONLY WITHIN 10 DEG EITHER SIDE OF CENTRELINE.)





## KAMLOOPS - CYKA - Cert

## METAR

METAR CYKA 170100Z 10011KT 40SM FEW075 BKN100 BKN250 18/05 A2981 RMK CU1AC4CI1 SLP100 DENSITY ALT 1900FT=

## TAF

TAF CYKA 170040Z 1701/1713 12008KT P6SM SCT060 SCT180 TEMPO  
1701/1713 BKN060  
BECMG 1707/1709 10005KT  
RMK NXT FCST BY 170700Z=

## NOTAM

(I1921/25 NOTAMN  
Q) CZVR/QOBCE/IV/M/AE/000/013/5043N12026W005  
A) CYKA B) 2505141400 C) 2505260200  
E) MOBILE CRANE WITHIN 100FT RADIUS CENTRED ON 504240N 1202616W APRX  
1470FT BFR DTHR 23 AND 2770FT NW EXTENDED RCL. 140FT AGL 1275FT  
AMSL. NOT LGTD, PAINTED.)

(F1515/25 NOTAMN  
Q) CZXX/QGWAU/IV/NBO/E/000/999/4647N12012W260  
A) CZVR CZEG B) 2505131200 C) 2505222259  
D) DAILY 1200-1559 1900-2259  
E) GPS INTERFERENCE EXER  
RADIUS 259NM CENTRE 464702N 1201153W FL400-UNL,  
246NM RADIUS AT FL250,  
174NM RADIUS AT 10000FT AMSL,  
164NM RADIUS AT 4000FT AGL,  
129NM RADIUS AT 50FT AGL.  
GNSS SIGNAL MAY BE PERIODICALLY INTERRUPTED. INFORM ATC OF ANY  
ADVERSE IMPACT.)

(I1701/25 NOTAMN  
Q) CZVR/QFFAH/IV/BO/A/000/999/5042N12027W005  
A) CYKA B) 2505011230 C) 2506010730  
E) ACFT RESCUE AND FIRE FIGHTING (ARFF) HR OF OPS:  
MON-FRI: 0000-0045 0115-0245 0500-0545 0630-0730 1230-1315  
1530-1830 2045-2230 2330-2359  
SAT: 0000-0045 0115-0245 0500-0545 0630-0730 1230-1315 1530-1830  
SUN: 0115-0245 0500-0545 0630-0730 1230-1315 1530-1830 2045-2230  
2330-2359

O/T 2HR PN COST RECOVERY)

(F1275/25 NOTAMR F0314/25  
Q) CZXX/QOEXX/IV/NBO/E/000/999/6650N11045W999  
A) CZEG CZVR B) 2504281317 C) 2507281400EST  
E) AIRSPACE SECURITY WARNING ISSUED BY THE DEPARTMENT OF TRANSPORT  
IN RESPONSE TO THE SECURITY SITUATION IN THE DEMOCRATIC REPUBLIC  
OF CONGO. CANADIAN AIR OPR AND OWNERS OF ACFT  
REGISTERED IN CANADA ARE RECOMMENDED NOT TO ENTER FIR KINSHASA  
(FZZA) BELOW FL260 DUE TO RISK FROM ANTI-ACFT WEAPONRY.)

(I0721/25 NOTAMN  
Q) CZVR/QPICH/I/NBO/A/000/999/5042N12027W005  
A) CYKA B) 2502200901 C) PERM  
E) AMEND PUBLICATIONS: LOC Z RWY 27 APCH: ADD OPS NOTE:  
DME RELIABLE ONLY WITHIN 10 DEG EITHER SIDE OF CENTRELINE.)

## KAMLOOPS (ROYAL INLAND HOSPITAL) - CBC4 - Cert

### NOTAM

(I1921/25 NOTAMN

Q) CZVR/QOBCE/IV/M/AE/000/013/5043N12026W005

A) CYKA B) 2505141400 C) 2505260200

E) MOBILE CRANE WITHIN 100FT RADIUS CENTRED ON 504240N 1202616W APRX

1470FT BFR DTHR 23 AND 2770FT NW EXTENDED RCL. 140FT AGL 1275FT

AMSL. NOT LGTD, PAINTED.)

(F1515/25 NOTAMN

Q) CZXX/QGWAU/IV/NBO/E/000/999/4647N12012W260

A) CZVR CZEG B) 2505131200 C) 2505222259

D) DAILY 1200-1559 1900-2259

E) GPS INTERFERENCE EXER

RADIUS 259NM CENTRE 464702N 1201153W FL400-UNL,

246NM RADIUS AT FL250,

174NM RADIUS AT 10000FT AMSL,

164NM RADIUS AT 4000FT AGL,

129NM RADIUS AT 50FT AGL.

GNSS SIGNAL MAY BE PERIODICALLY INTERRUPTED. INFORM ATC OF ANY ADVERSE IMPACT.)

(I1701/25 NOTAMN

Q) CZVR/QFFAH/IV/BO/A/000/999/5042N12027W005

A) CYKA B) 2505011230 C) 2506010730

E) ACFT RESCUE AND FIRE FIGHTING (ARFF) HR OF OPS:

MON-FRI: 0000-0045 0115-0245 0500-0545 0630-0730 1230-1315

1530-1830 2045-2230 2330-2359

SAT: 0000-0045 0115-0245 0500-0545 0630-0730 1230-1315 1530-1830

SUN: 0115-0245 0500-0545 0630-0730 1230-1315 1530-1830 2045-2230

2330-2359

O/T 2HR PN COST RECOVERY)

(F1275/25 NOTAMR F0314/25

Q) CZXX/QOEXX/IV/NBO/E/000/999/6650N11045W999

A) CZEG CZVR B) 2504281317 C) 2507281400EST

E) AIRSPACE SECURITY WARNING ISSUED BY THE DEPARTMENT OF TRANSPORT

IN RESPONSE TO THE SECURITY SITUATION IN THE DEMOCRATIC REPUBLIC

OF CONGO. CANADIAN AIR OPR AND OWNERS OF ACFT

REGISTERED IN CANADA ARE RECOMMENDED NOT TO ENTER FIR KINSHASA

(FZZA) BELOW FL260 DUE TO RISK FROM ANTI-ACFT WEAPONRY.)

(I0721/25 NOTAMN

Q) CZVR/QPICH/I/NBO/A/000/999/5042N12027W005

A) CYKA B) 2502200901 C) PERM

E) AMEND PUBLICATIONS: LOC Z RWY 27 APCH: ADD OPS NOTE:

DME RELIABLE ONLY WITHIN 10 DEG EITHER SIDE OF CENTRELINE.)